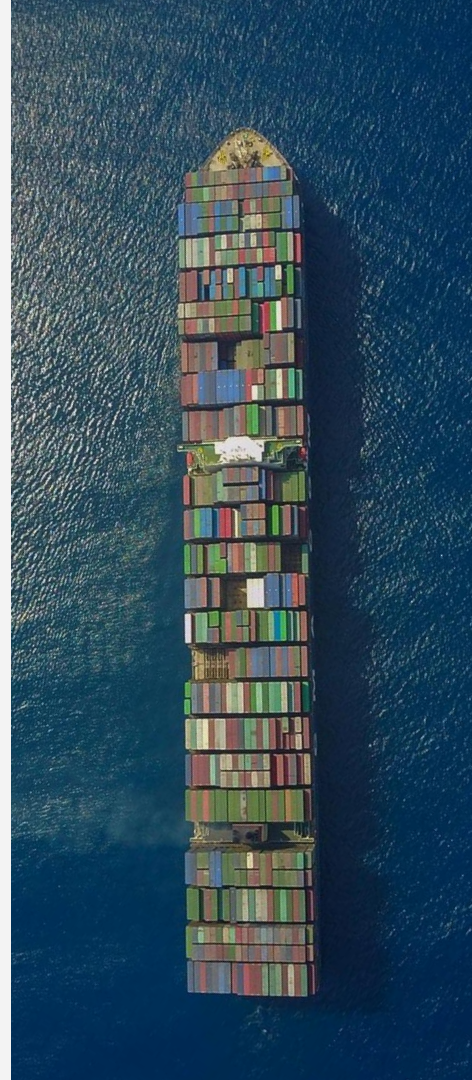


# Scaling digitalisation in maritime; the role of connectivity





Trusted by:









Feuer 112 | Notr. 110

3. Oktober 1912  
An die Frau  
Mutter  
für die 1/2 J. an  
die 2. J. an  
die 3. J. an  
die 4. J. an  
die 5. J. an  
die 6. J. an  
die 7. J. an  
die 8. J. an  
die 9. J. an  
die 10. J. an  
die 11. J. an  
die 12. J. an  
die 13. J. an  
die 14. J. an  
die 15. J. an  
die 16. J. an  
die 17. J. an  
die 18. J. an  
die 19. J. an  
die 20. J. an  
die 21. J. an  
die 22. J. an  
die 23. J. an  
die 24. J. an  
die 25. J. an  
die 26. J. an  
die 27. J. an  
die 28. J. an  
die 29. J. an  
die 30. J. an  
die 31. J. an  
die 32. J. an  
die 33. J. an  
die 34. J. an  
die 35. J. an  
die 36. J. an  
die 37. J. an  
die 38. J. an  
die 39. J. an  
die 40. J. an  
die 41. J. an  
die 42. J. an  
die 43. J. an  
die 44. J. an  
die 45. J. an  
die 46. J. an  
die 47. J. an  
die 48. J. an  
die 49. J. an  
die 50. J. an  
die 51. J. an  
die 52. J. an  
die 53. J. an  
die 54. J. an  
die 55. J. an  
die 56. J. an  
die 57. J. an  
die 58. J. an  
die 59. J. an  
die 60. J. an  
die 61. J. an  
die 62. J. an  
die 63. J. an  
die 64. J. an  
die 65. J. an  
die 66. J. an  
die 67. J. an  
die 68. J. an  
die 69. J. an  
die 70. J. an  
die 71. J. an  
die 72. J. an  
die 73. J. an  
die 74. J. an  
die 75. J. an  
die 76. J. an  
die 77. J. an  
die 78. J. an  
die 79. J. an  
die 80. J. an  
die 81. J. an  
die 82. J. an  
die 83. J. an  
die 84. J. an  
die 85. J. an  
die 86. J. an  
die 87. J. an  
die 88. J. an  
die 89. J. an  
die 90. J. an  
die 91. J. an  
die 92. J. an  
die 93. J. an  
die 94. J. an  
die 95. J. an  
die 96. J. an  
die 97. J. an  
die 98. J. an  
die 99. J. an  
die 100. J. an



tex

0247110200

MOITERRAAN  
SUDAN

MSC

FEK

MSC

SUDAN  
084400  
2261

0000 123456  
2261

FEK

FCIU 398008  
2261

MAX GROSS  
WE 18,000 KG  
MAX CARGO  
VOL CAP 24,000 LIT



Safmarine

AKU  
93 938  
2261



MAERSK

AKU  
51 592  
2261

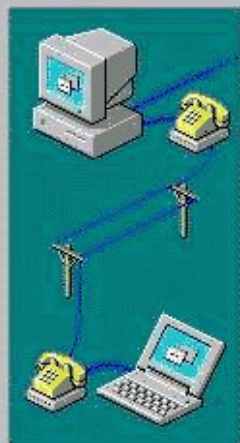


MAERSK

AKU  
57 938  
2261



## Make New Connection



Type the phone number for the computer you want to call:

Area code:

0844

Telephone number:

xxxxxxx

Country code:

United Kingdom (44)

< Back

Next >

Cancel

0.49% of cc32e47.exe Completed



Saving:

cc from ftp.netscape.com

Estimated time left: 39 years (8.89 MB of 180 MB copied)

Download to: D:\Other stuff\Downloads\cc32e47.exe

Transfer rate: 4.61 KB/Sec

☐ Close this dialog box when download completes

Open

Open Folder

cancel

Disruptor



Commodity

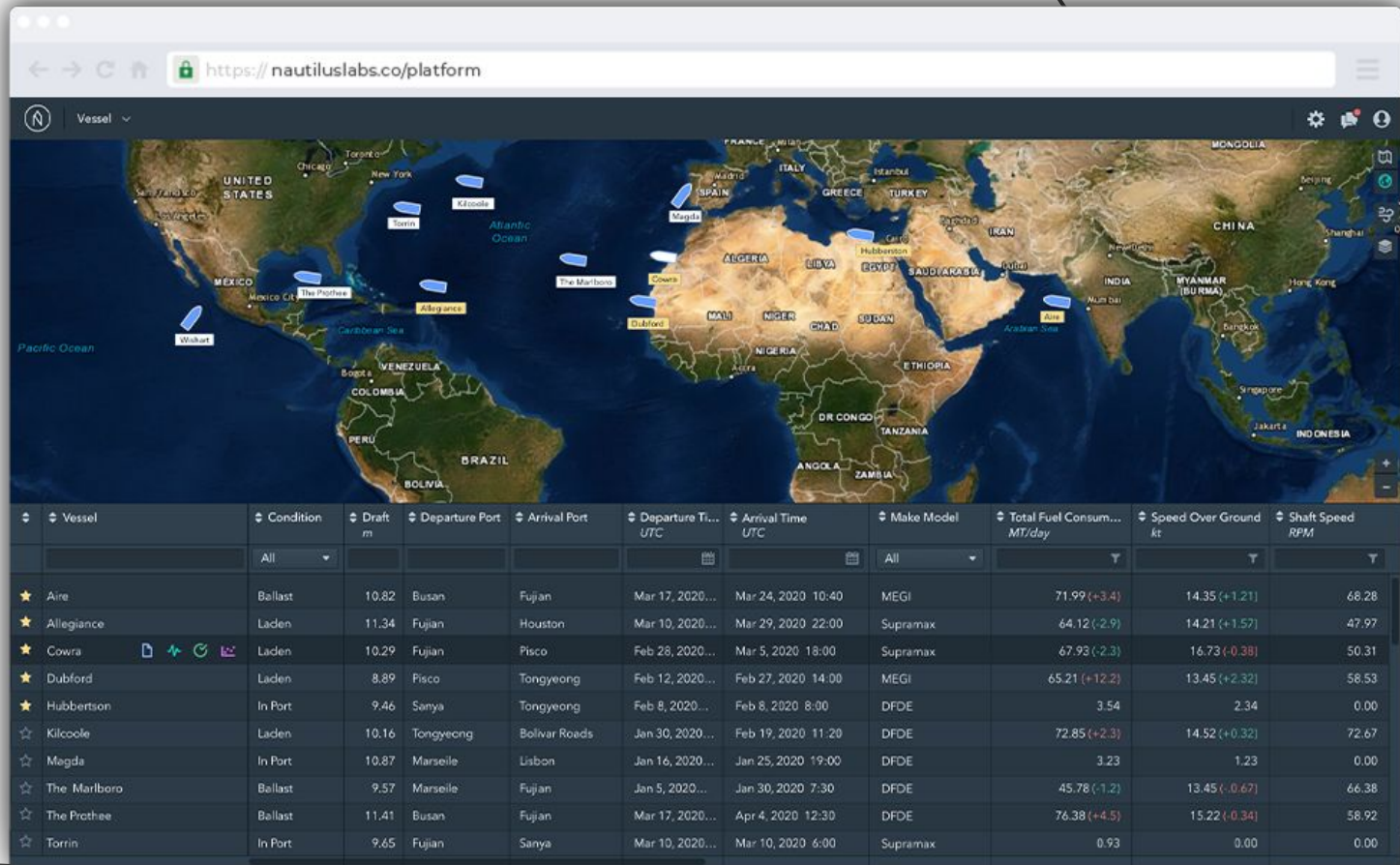


Utility



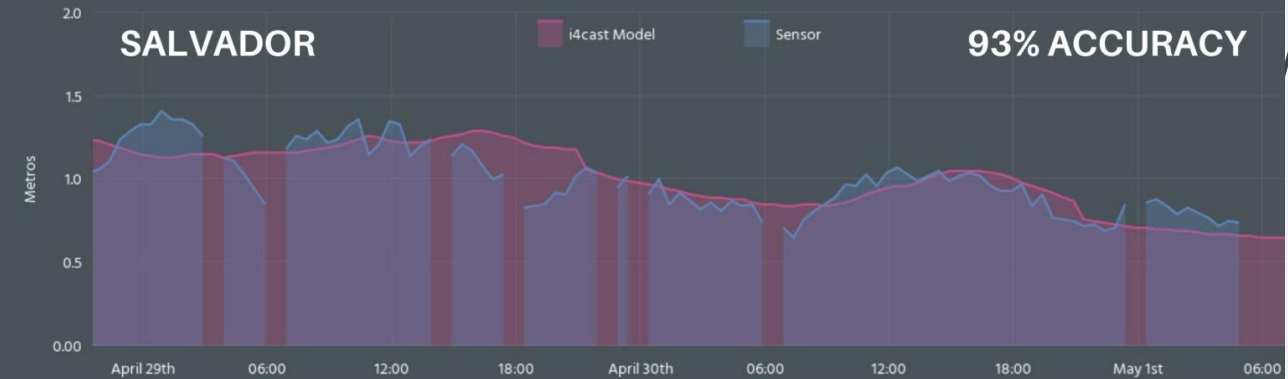
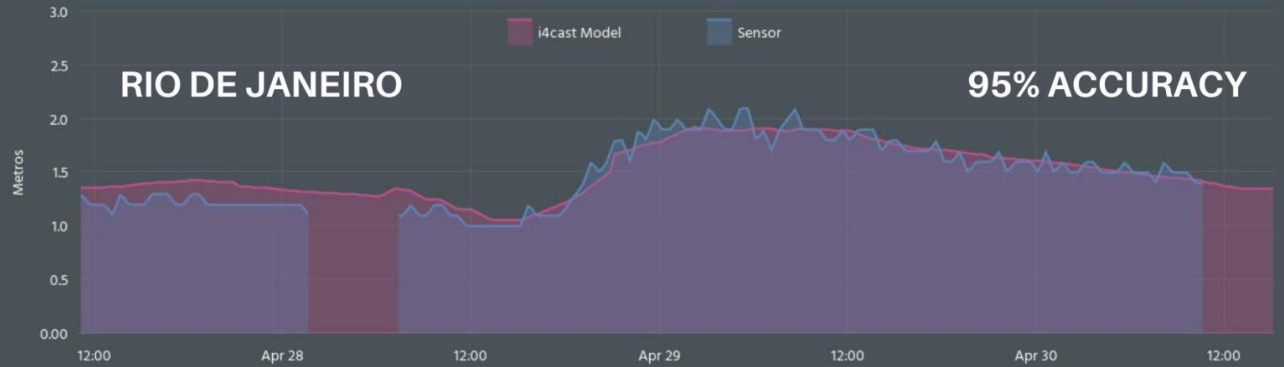








# ATMOCEAN® - WAVE HEIGHT



1. PROJECT SPECIFICATION
2. YARD SELECTION
3. PROJECT EXECUTION
PROJECT SETTINGS

Work orders

24

WORK ORDERS

Hull

8

Machinery main components

8

Ship equipment

3

Equipment for crew and passengers

3

Equipment for cargo

2

\$

\$167250

TOTAL ESTIMATE (USD)

Hull

120830

Machinery main components

25700

Equipment for crew and passengers

10080

Ship equipment

8600

Equipment for cargo

2940

EXPORT

HIDE STATS

ADD

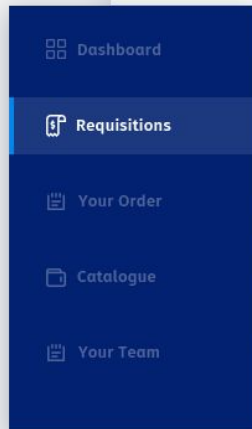
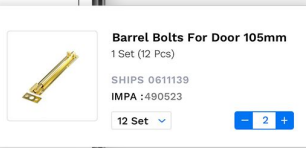
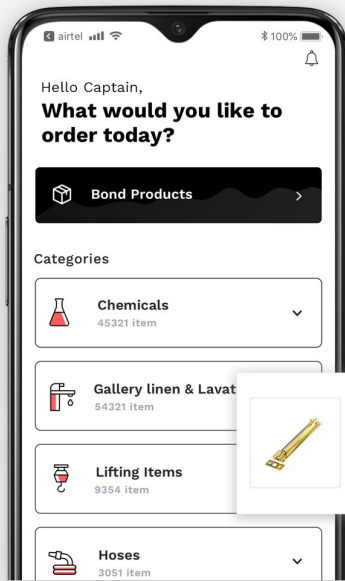
Q

Search name, group, content, etc.

ID NO.	WORK ORDER NAME	GROUP	TO BE EXECUTED BY	ESTIMATE	RESPONSIBLE INTERNALLY	STATUS
305-004	Realignment of panel	Equipment for cargo	Yard	1200		Not started
305-010	Hydraulic cylinders inspection and overhaul	Equipment for cargo	Riding crew	840		Not started
403-001	Steering gear service	Ship equipment	Specialist	1500		Not started
431-001	Install cooling fan for anchor cable lifter hydraulic	Ship equipment	Yard	4300		Not started
434-001	Install field bus on mooring winch ABB ACS-800	Ship equipment	Specialist Yard	2900		Not started
502-001	Testing of liferaft davits	Equipment for crew and passengers	Specialist	1800		Not started

Chat



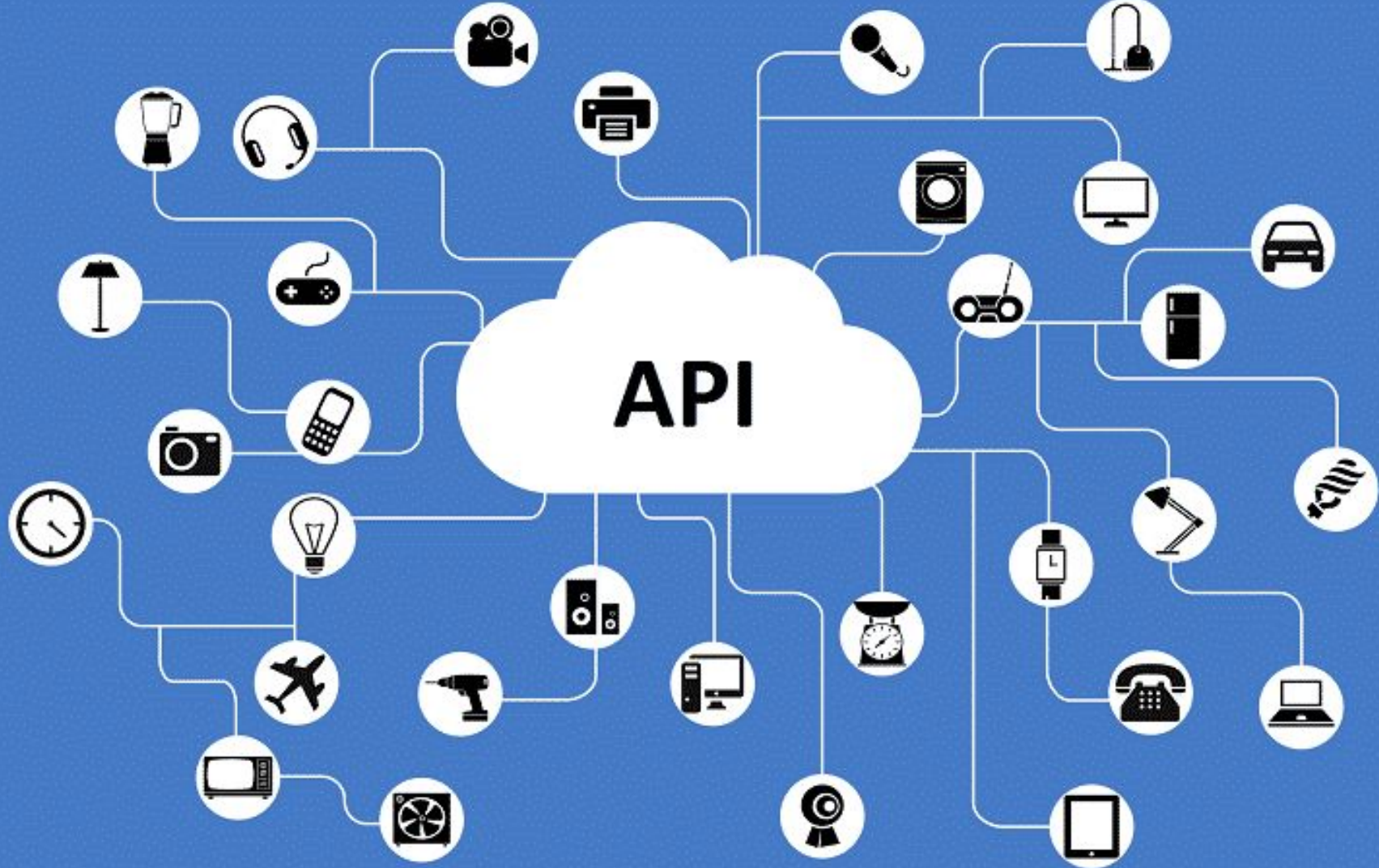


Requisition No.	Category of products	Ship	Assigned to	Requisition placed on	Status
<input type="text" value="Enter No."/>	<input type="text" value="Select Category"/>	<input type="text" value="Select Ship"/>	<input type="text" value="Assigned to"/>	<input type="text" value="Select Date Range"/>	<input type="text" value="Select Status"/>
BOURB-246	Chemical	Maritime Company	Sumit Chaudhary	11 Jun 2019	Order Delivered
BOURB-246	Hardware	Maritime Company	Ashish Anand	10 May 2019	Requestion Cancelled
BOURB-246	Galley Linen & Lavatory	Maritime Company	Abhinav Agarwal	05 May 2019	Order Placed
	Health, Safety & Environment	Maritime Company	Yogesh Gupta	29 Apr 2019	Awaiting Approval
	Hoses	Maritime Company	Rishab Mehra	04 Apr 2019	Requestion Cancelled
	Lifting Items	Maritime Company	Shivendra Pandey	01 Mar 2019	Order Delivered
	Lubes	Maritime Company	Rajiv Mishra	28 Feb 2019	Order Delivered
	Navigation Equipment	Maritime Company	Ivaan Sharma	20 Jan 2019	Order Placed
	Paint	Maritime Company	Pardeep Sabarwaal	15 Jan 2019	Order Placed
	Provisions	Maritime Company	Shivay Oberoi	01 Jan 2019	Order Delivered











### Dark Sky

The easiest, most advanced, weather API on the web.

9.6 356ms 99%



### ClimaCell

MicroWeather API – An all-in-one weather API: Get th...

Verified ✓

9.5 939ms 97%



### Open Weather Map

Get weather and weather forecasts for multiple cities...

Verified ✓

9.9 124ms 91%



### National Weather...

National Weather Service API (api.weather.gov) NOA...

9.8 73ms 100%



### Tides

Global Tides API provides tidal heights predictions at...

9.4 501ms 100%



### US Weather By Zi...

Provides current weather information for US cities b...

Verified ✓

8.7 69ms 91%



### Visual Crossing W...

Visual Crossing Weather API provides instant acces...

Verified ✓

9.2 413ms 100%



### Weather

Weather2020 is the most popular long range weathe...

8.5 258ms 57%



### AerisWeather

An advanced weather API to power all of your business...

Verified ✓

9.1 426ms 100%



### Air Quality

Retrieve current, forecasted, and historical air quality fo...

8.4 321ms 100%



### climate data

climate data worldwide

7.6 418ms 100%



### tnql coords trial v2

1時間ごとに更新される最新の気象情報と、お天気...

6.7 394ms 95%



Open the [NxtPort console](#) and manage your assets



Scroll down and take a look at [our APIs](#)



A glimpse of our future [roadmap](#)

Live Pilot Applications

## Live

Service Live



### Arrival at Exit

Send the Charge Report (IE507) to Customs for export containers known in the E-balle application

Powered by C-point

API Live



### Bulkchain

Bulkchain digitises the non-commercial communication between all supply chain members in the Breakbulk & project cargo sector.

API Live



### CCRM

Request or get notified about the Customs status of a container and know when it is allowed to leave the terminal.

API Live



### e-Balle+ Notifications

Receive status updates for cargo reported through e-Balle+e-Desk

Powered by C-point

Service Live



### Export Manifest

Send an automated manifest when vessels with export cargo leave the port

Powered by Port+

API Live



### Import Consignment

Re-use the cargo information digitally

API Live



### Port Directory

Up to date contact information by integrating your systems with the yellow pages of the port community

Powered by Port+

API Live



### Portcall+

Precise and real-time information on the movement of vessels

Powered by Port+

API Live



### Oronoport

Get visual insights into what other stakeholders have planned on liquid bulk vessels you have to work on, improving planning and reduce lost time.

API Live



### Terminal Events

Enrich your view on your container voyage by obtaining the terminal gate in and out moves

API Live



### Tresco Location

Lat 51.297273 / Lon 4.268129 may not ring a bell, 'Deurgandck' probably does

API Live



### UNLocode

Use the UNLocode dataset with ease in your applications



## Certified Application Providers

[SHOW ALL](#)
[FLEET DATA](#)
[FLEET CONNECT](#)


FLEET DATA

ABB

ABB's analytics monitoring and decision-making software enhances ship efficient and benchmarks fleet performance.

[Read more](#)



FLEET CONNECT

AMA

AMA is an international company specializing in the development of connected vessel and fleet management remote collaboration solutions.

[Read more](#)



FLEET DATA

Ascenz – Shipulse

Ascenz's Shipulse is a smart-shipping solution that provides complete vessel and fleet management on one single platform.

[Read more](#)



FLEET CONNECT

Hyundai Global Service

Hyundai Global Service's total care solution provides ship-owners with a variety of sensor-driven applications measuring voyage and equipment operating data including fuel consumption and vibration monitoring, plus HGS analytics and reporting services.

[Read more](#)



FLEET DATA

i4sea: i4cast@ platform

i4sea provides a high-precision sea and weather forecasting application with up to seven days forecasting in advance through i4cast@'s Am Ocean@ tool.

[Read more](#)



FLEET DATA

IB – InfoSHIP® PERFORMANCE

InfoSHIP® PERFORMANCE is a whole new way of collecting, extracting and processing data from any system installed onboard a ship, along with data from day-to-day operations.

[Read more](#)



FLEET DATA

NAPA Fleet Intelligence

Software, Services, and Data Analysis for Ship Design and Operation, available through Fleet Data NAPA combine naval architecture, shipping, and digital expertise to help maritime business make the decisions that matter.

[Read more](#)



FLEET DATA

nauticAi BOQA

Highly visual Fleet Data with automated Bridge Operational Quality Assurance (BOQA) functionality. nauticAi is a Finnish maritime IoT provider, specialising in data-driven intelligent awareness solutions such as BOQA.

[Read more](#)

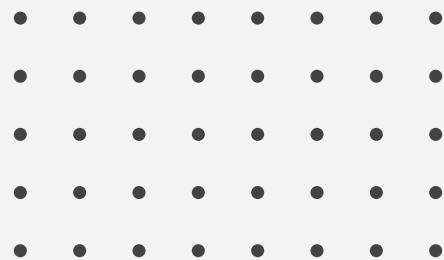


FLEET DATA

Nautilus Labs

Nautilus Labs uses the Fleet Data API (Application Programming Interface) to help automate data collection as part of Nautilus Platform, a proprietary fleet optimisation UI (user interface) that provides shipping owners and operators with predictive analytics to reduce fuel consumption, improve decision making, and meet international and local environmental standards – all in real time.

[Read more](#)



nick@thetius.com  
+44 208 614 0788

To find out more about our work, access our free innovation  
database, or to become a client go to **thetius.com**