

Gain the Global Edge on Digital Transformation Projects

Albie Bester – Market Development Manager – Networks BU

February 2024



IntelSat's Global Reach

Well positioned as the world's most trusted satellite telecom network



We're the largest satellite capacity provider to the U.S. government



We provide inflight internet to 21 commercial Airline Partners and nearly 3,000 Aircraft



We are the leading provider of satellite bandwidth to the maritime industry



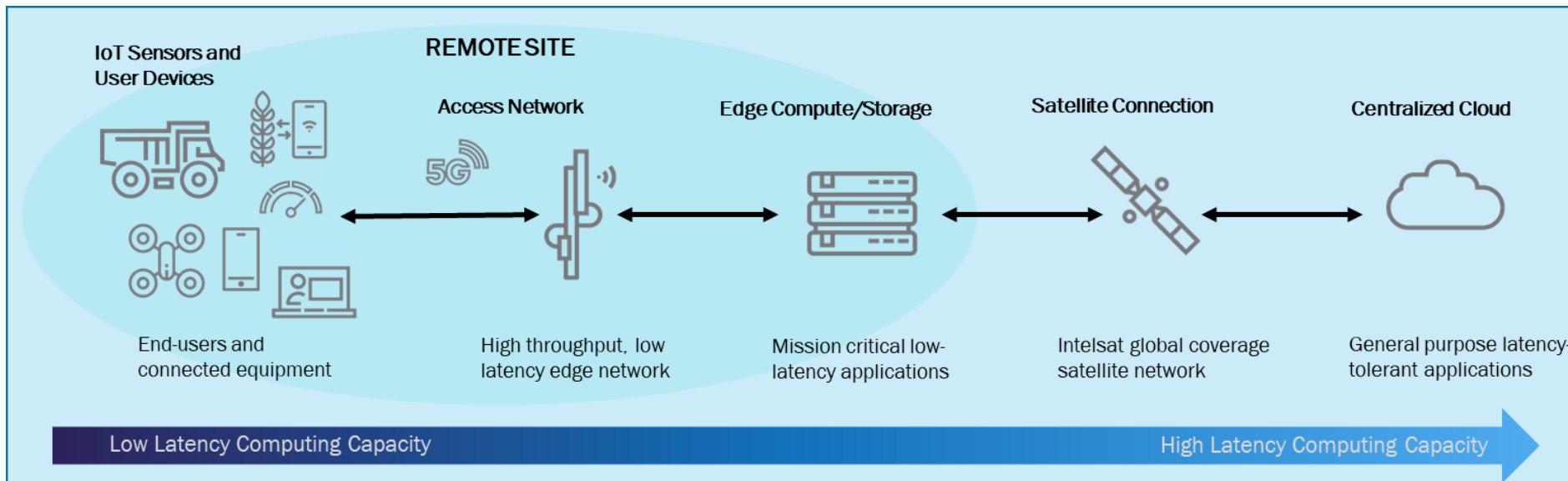
We deliver TV and radio content to more than two billion people worldwide



We serve 7 of the world's top 10 Mobile Network Operators

Intelsat Global Edge

Enabling Microsoft Azure private LTE/5G networks and private Multiaccess-Edge Compute(pMEC) services over satellite networks at enterprise locations virtually anywhere in the world, including remote and austere environments.



Intelsat Global Edge delivers cloud services wherever it benefits the enterprise.

Connected mine – Private 5G and Cloud

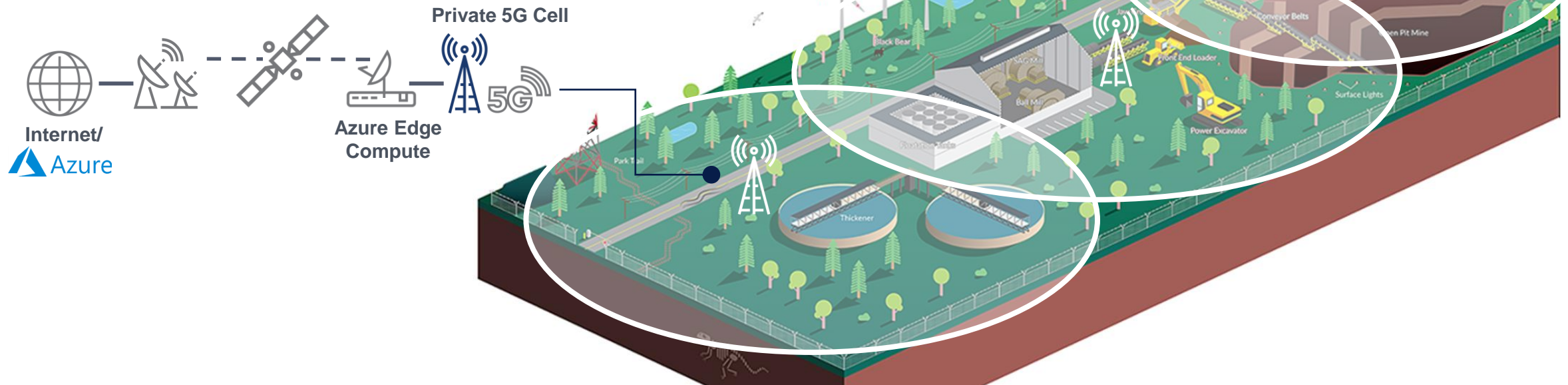
Azure pMEC and private 5G have the potential to significantly improve mine safety, efficiency, and productivity

Edge Applications

- Environment monitoring
- Underground mine stability
- Worker safety monitoring
- Operations data collection

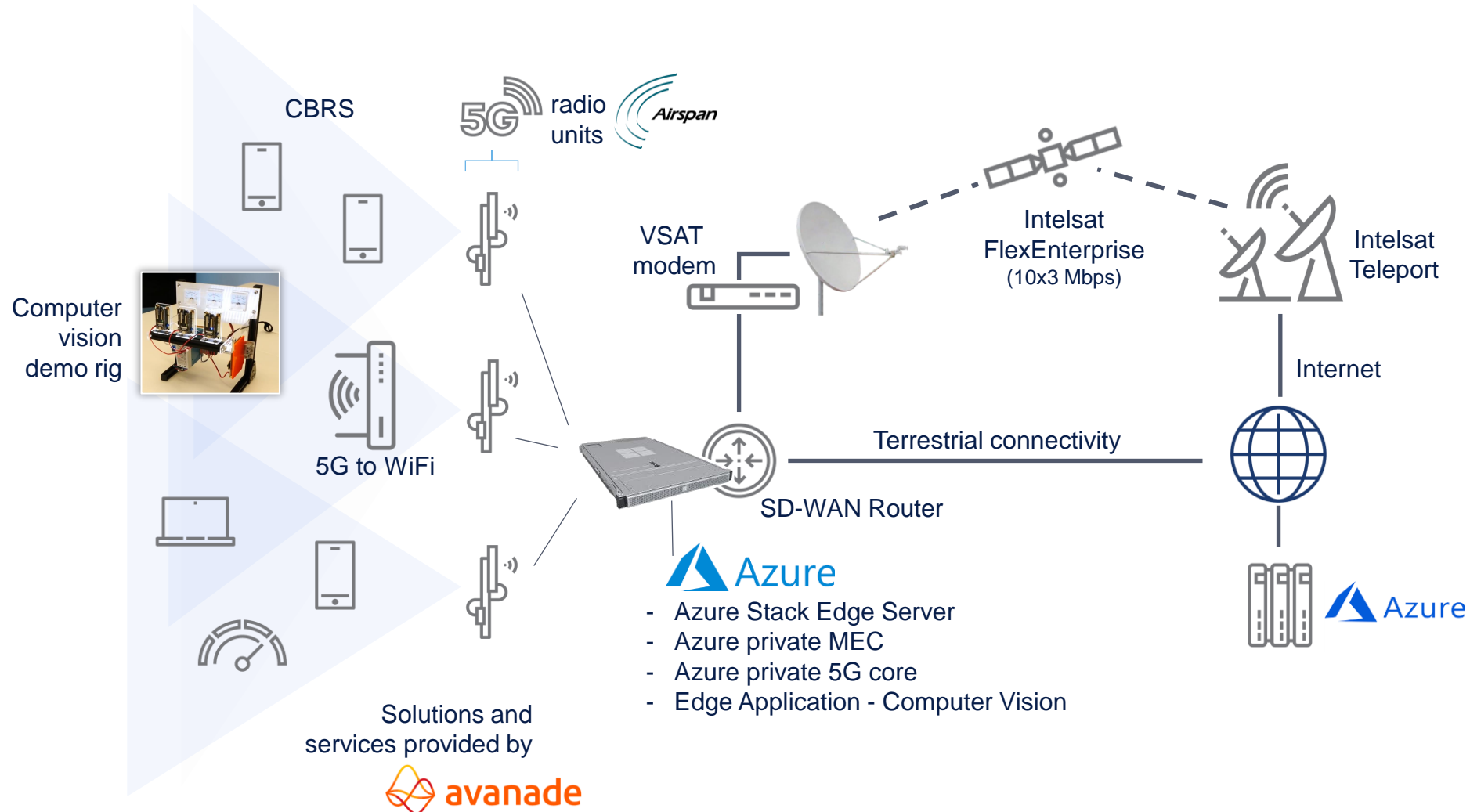
Private 5G Network

- Connect local devices and users
- More scalable than Wi-Fi



Satellite-enabled Azure pMEC and p5G

Deployed in McLean, Virginia office with services from Avanade and assistance from Microsoft

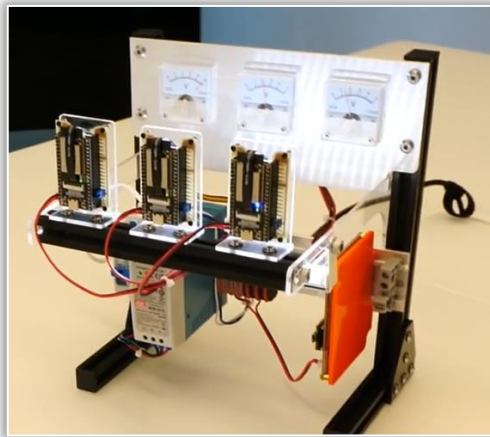


Computer Vision and AI at the edge

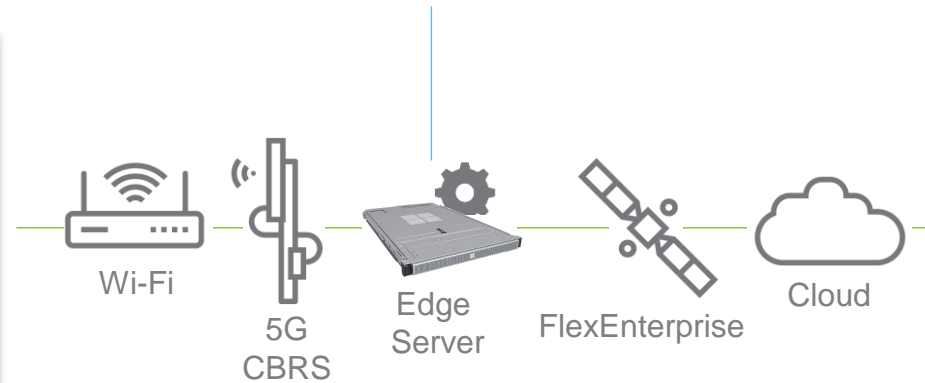
Digitizing analog environments, enabling digital transformation of legacy infrastructure

In our demo:

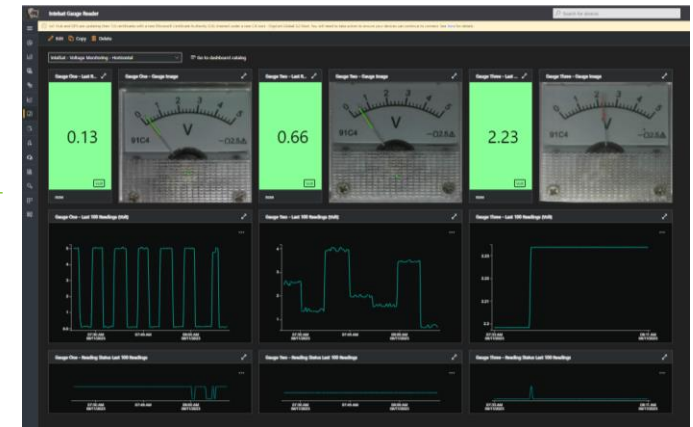
Remote gauges are read through small cameras...



Gauge values are digitized with the help of AI...



Values and images are displayed on the online dashboard.



- No need to replace sensors at remote sites to monitor production environments
- Running AI software at the edge promotes low latency and accuracy for rapid reporting

Targeted Use Cases



Renewable Energy

Benefits;

- Improving operational efficiency, safety, and reducing the need for on-site personnel
- Edge computing is ideally suited for applications requiring rapid decision-making and response.



Mining

Benefits;

- Improved safety, enhanced communication, and optimized operations, ultimately contributing to a more efficient and secure mining environment
- Private 5G networks can revolutionize mining operations by providing rich connectivity to enable smart mining.





Thank you

Albie.bester@intelsat.com

