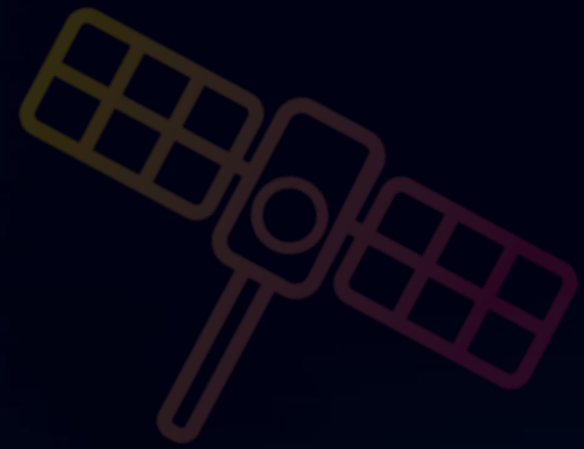


Reliable and Scalable NTN IoT: The Value of Dedicated Satellite Connectivity

The IoT Connection – April 9, 2026

Kinéis' Mission

IoT data you can rely on – Anywhere on Earth



We make your data accessible and ensure seamless transmission worldwide through our dedicated IoT satellite network.

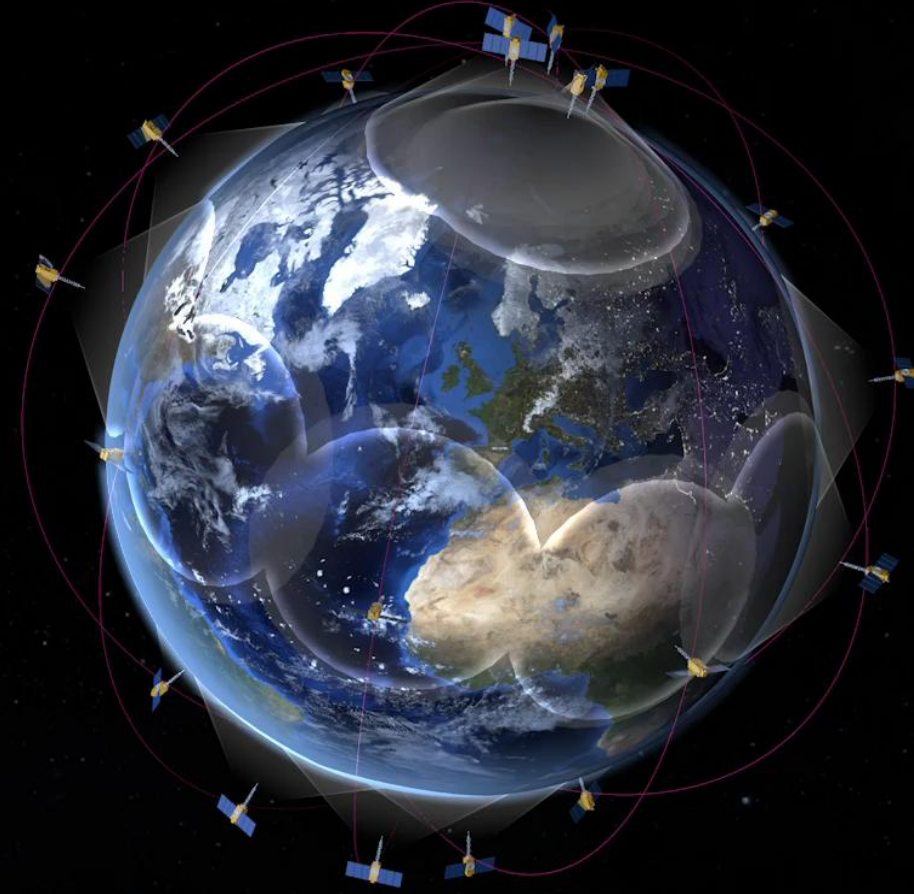


85 %

of the planet is **not covered**
by **terrestrial networks**

Kinéis connects 100% of the planet

- **25** nanosatellites / **20** ground stations
- Fully deployed EU-sovereign constellation
- Secured by design
- Flight and missions internally operated
- **40+ years** of Argos lifelong heritage
- **Consistent and reliable connectivity worldwide**



IoT Use Cases & Solutions

From collection to actionable insights, already deployed



Fire detection



Fishing vessel tracking



Water management



Water tank levels monitoring



Power line monitoring



Container tracking



Freight wagon tracking

25k+
ACTIVE
DEVICES

Building a scalable path toward standardization



Greater scalability

Expanding capacity to meet growing IoT demand, with enhanced capabilities that complement existing licensed UHF frequencies.



Cost-efficient architecture

A dedicated IoT constellation designed for efficient deployment and operations



Timely data delivery

LEO satellites and ground infrastructure enable frequent data collection for critical use cases

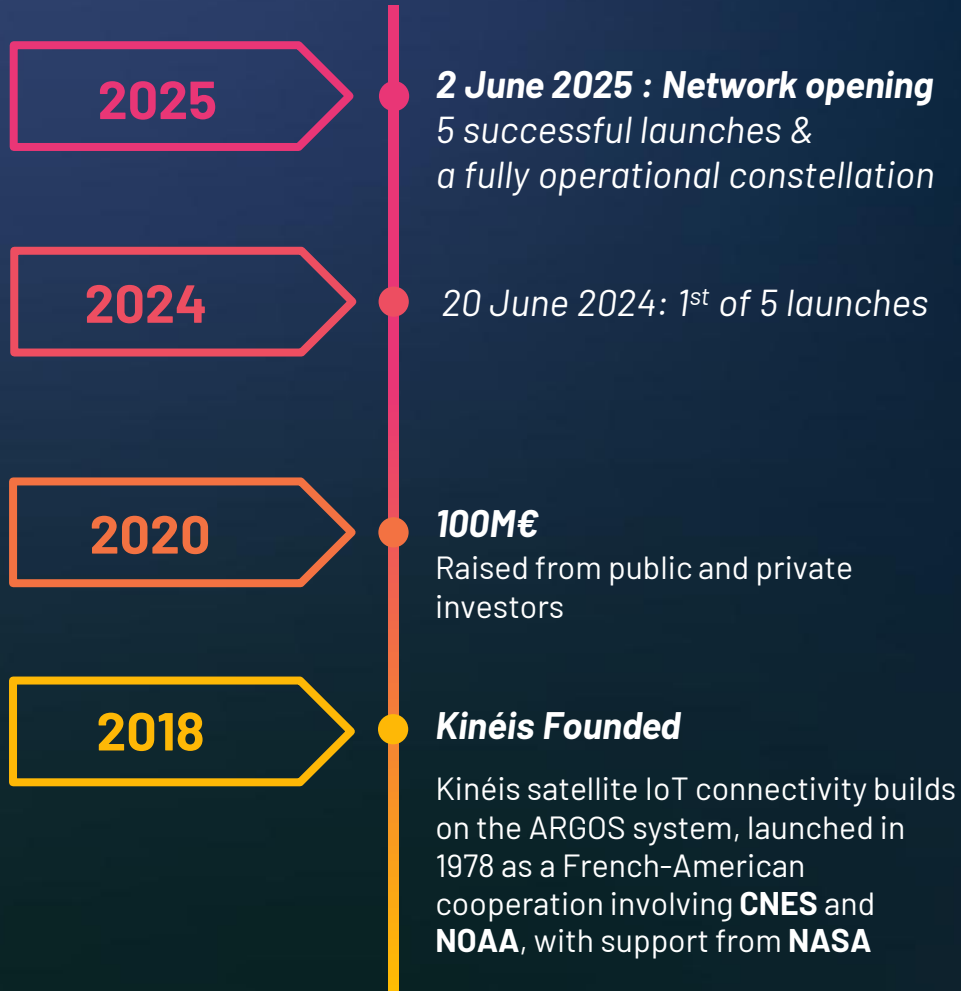


Broader device ecosystem

Progressively opening the way to more standardized radio technologies and wider device compatibility (5G, LoRaWan)

Facts & Figures

About Kinéis



60 experts' staff



200 people mobilized

1st European-made constellation dedicated to IoT



25 cutting-edge nanosatellites



40 years' experience in data collection



20 ground stations around the world



1 global coverage



25,000 connected devices

Thank you!

Any questions?
Bruno Béchard

bbechard@kineis.com

